



# Digital Workplace Solutions:

## Communication, Engagement & Space Optimization

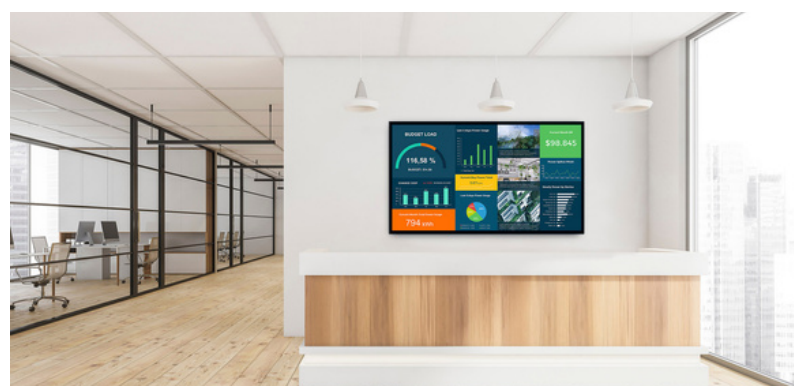
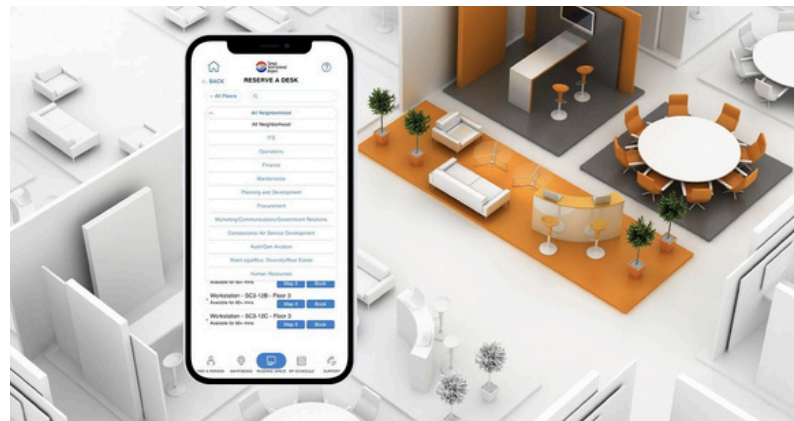
### Creating a Connected, Agile Workplace

Modern workplaces are evolving rapidly, with organizations facing challenges in optimizing space, fostering engagement, and managing hybrid teams effectively. Businesses require smarter communication tools, seamless space utilization solutions, and data-driven insights to enhance efficiency while adapting to a flexible, digital-first work environment.

### The 22Miles Solution: Smarter Communication & Workplace Management

22Miles provides an all-in-one workplace management platform that integrates digital signage, space optimization tools, and real-time communication solutions. By centralizing content management, automating scheduling, and delivering interactive wayfinding, 22Miles transforms the modern workplace into a connected, engaged environment.

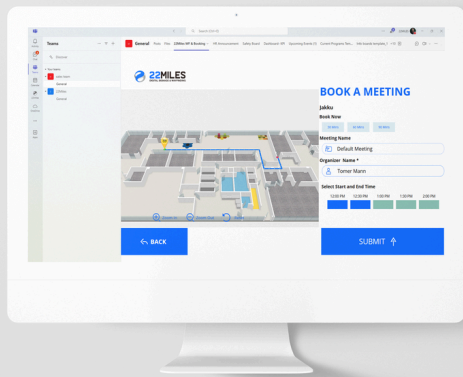
Designed for organizations of any size and industry, whether a single office, multi-campus enterprise, or global corporation, 22Miles scales to meet the needs of modern businesses.



## What 22Miles Offers: Workplace Communication & Space Management Solutions

### Digital Communication

- Messaging across digital signage, kiosks, video walls, and mobile devices.
- Broadcast corporate updates, event notifications, and performance dashboards.
- Centralized content management for consistent communication.
- Interactive messaging with touchscreens and mobile integration.



### Dynamic Wayfinding

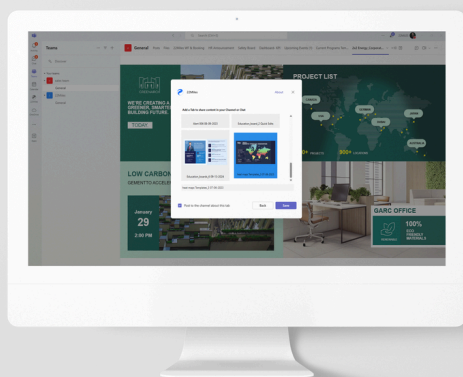
- Interactive 3D maps to help employees and visitors navigate workplaces.
- Locate available workspaces, meeting rooms, and colleagues instantly.
- Accessible via displays, tablets, Desktop, Teams, Outlook, or mobile devices.

### Space Management & Room Booking

- Frictionless booking system for desks, meeting rooms, and event spaces.
- Integration with occupancy sensors, RFID readers, and automated check-ins.
- Data-driven workspace allocation for increased efficiency.

### Mobile Intergration

- Seamless content transfer from digital signage to mobile devices.
- Interactive wayfinding, directories, and real-time updates—no app required.
- Effortless QR-powered engagement for navigation and information access.
- Extend the digital experience with mobile-friendly, on-the-go connectivity.



### Seamless Workplace Communication & Collaboration

Enhance team connectivity with the 22Miles Employee Office Suite, integrated with Microsoft Teams & Outlook. Streamline content sharing, meeting scheduling, and internal communications across digital signage, mobile apps, and Teams channels—keeping employees informed and engaged anytime, anywhere.

[Learn More](#)

## 22Miles Workplace Solution Capabilities

Work smarter with an intelligent platform designed to centralize communication, optimize space management, and automate workflows.

- **Centralized Messaging & Scalable Communication:** Distribute updates, performance data, and emergency alerts across 50 to 50,000 screens.
- **Data-Driven Insights:** Track office space utilization, workspace occupancy, and employee flow for informed decision-making.
- **Automated Event & Space Scheduling:** Sync calendars, manage reservations, and optimize workspaces with intelligent automation.
- **Seamless Device & System Integration:** Connect with Crestron, Cisco Meraki, or Neat occupancy sensors, and RFID for enhanced efficiency.
- **API-Driven Flexibility:** Integrate with O365, Exchange, G Suite, access control systems, SSO, IT reporting, and communication & dashboard platforms.
- **Custom UI & Branded Workflows:** Tailor workspace experiences with widgets, branding, and adaptable interface elements.

### Limitless Possibilities for Connection

22Miles seamlessly incorporates your organization's essential information, emergency alerts, news, stats, events, and other data feeds vital to you into singular system management automation. These feeds will update dynamically on their own, allowing you to perform your day to day activities with displays functioning independently in the background.



## Benefits

- **Enhanced Communication:** Unified messaging across digital signage, kiosks, mobile devices, and video walls to ensure consistent communication with frontline and office workers.
- **Optimized Space Utilization:** Smart scheduling and analytics to maximize office efficiency.
- **Seamless Hybrid Work Experience:** Integrated mobile solutions for effortless workspace management.
- **Increased Employee Engagement:** Interactive wayfinding and self-service options boost workplace satisfaction.
- **Scalable & Future-Proof:** A flexible platform that grows with business needs, integrating with existing and emerging technologies.
- **Sustainable & Cost-Effective:** Reduce screen clutter with eco-friendly signage solutions.

### Pro Tip

#### 1 - Sustainable Smarter Signage with ecoPUK Laser-Engraved Signage

Simply tap or scan to access digital content without powered screens.

This environmentally friendly solution reduces screen dependency while offering interactive, updateable content.

#### 2 - Immersive Experiences

Create an experience or innovation center design with 22Miles customization services and interactive design capabilities.

Provide a large array or multi-touch experience for your corporate lobby or guest experience that is eye-catching and engaging for all.

## Elevate Workplace Efficiency with 22Miles

22Miles unifies communication, space management, and collaboration into a single, scalable platform—enhancing efficiency, engagement, and flexibility. With seamless integrations and mobile-first experiences, your workplace stays agile and optimized. As a leader in workplace management, 22Miles helps you transform your operations. Book your demo today.

# Hardware agnostic to support all your workspace digital devices



Plus peripherals and edge connect devices such as occupancy sensors, motion sensors, RFID, NFC, badge reading technology, LED controlled lights and more.